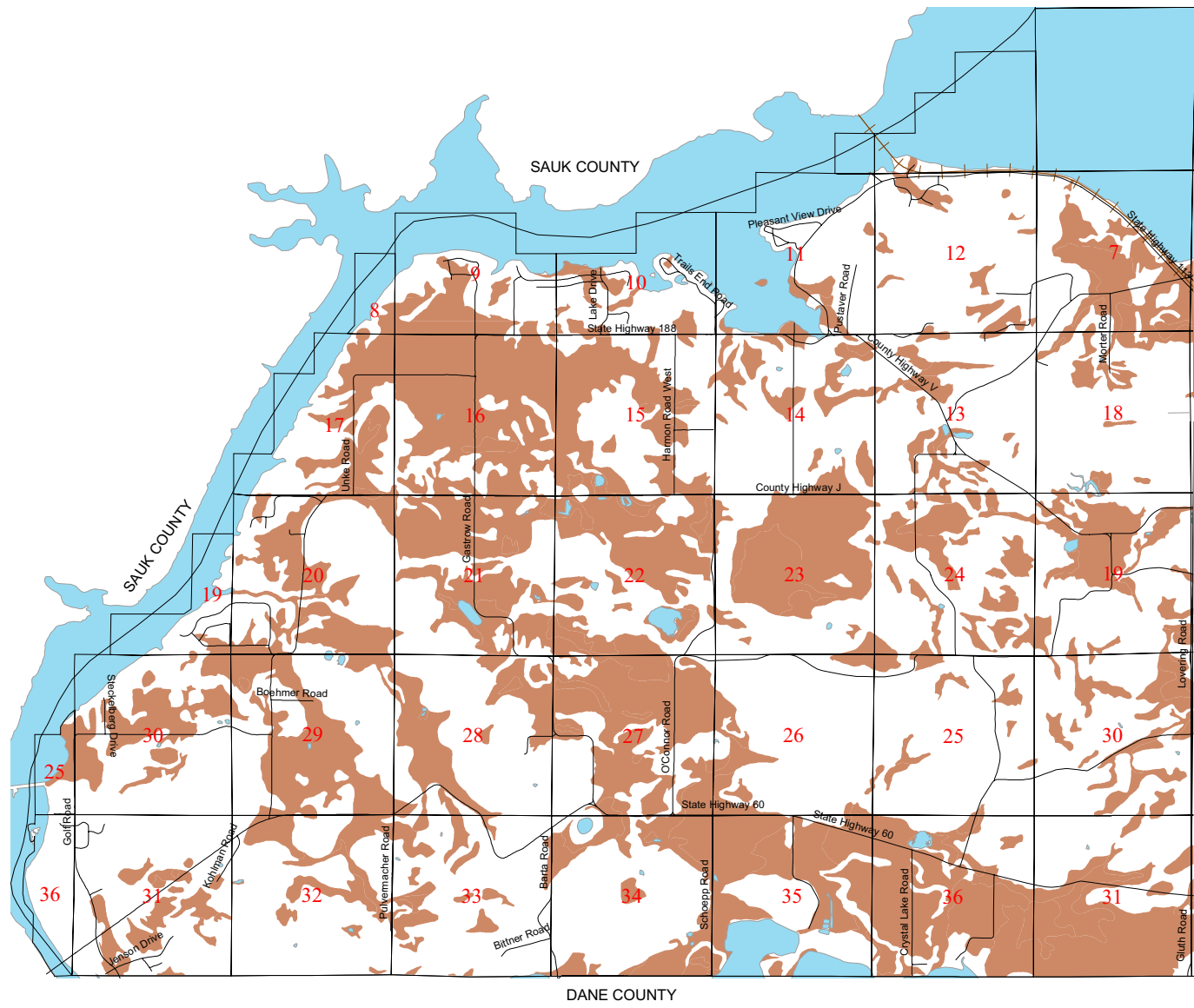
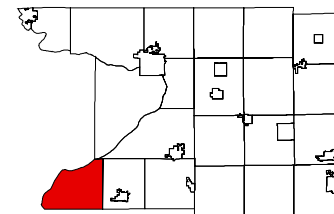



**MAP 5-4
PRODUCTIVE
AGRICULTURAL SOILS**
Town of West Point
Columbia County,
Wisconsin



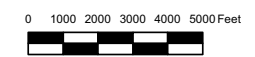
TOWN OF LODI

 Prime Farmland¹

1. Prime farmland was derived using USDA-SSURGO data. Prime farmland as defined by the U.S.D.A. as land that has the best combination of physical and chemical characteristics for producing food & fiber in for the nation. Prime Farmland primarily contains Class I, II, and III soils.

This drawing is neither a legally recorded map nor a survey and is not intended to be used as one. This drawing is a compilation of records, information and data used for reference purposes only.

Source: NRCS, USDA, Columbia County Land Information, Columbia County Planning, 2005



Created July 26, 2005 by RNT